

WELCOME BACK FROM THE HALF-TERM II BREAK

Welcome back to GISU from the Half-Term Break. We hope you and your family enjoyed a fantastic holiday and that the students are ready for an exciting remainder of Term II. A special welcome to all new students who are joining us this term and to their families. All the school activities are up and running as usual. We will endeavour to keep you updated on the upcoming school programmes this term. For us to have a fruitful term, your support is greatly valued and it makes a difference for the remaining half of this Term.



STUDENT AWARDS

Galaxy International School Uganda wishes to announce the student awards for their outstanding performance.

1. Subject Award for Candidates

A Level	
Grades	Amount (UGX)
A*	200,000
A	150,000
B	100,000

AS Level	
Grades	Amount(UGX)
A	100,000
B	50,000

IGCSE Level	
Grades	Amount (UGX)
A*	75,000
A	50,000

YEAR 9 CHECKPOINT	
Grades	Amount (UGX)
6 Points	50,000

YEAR 6 CHECKPOINT	
Grades	Amount (UGX)
6 Points	50,000

2. Top student per level: Candidates

Type	Amount (UGX)	Condition
Top A Level	1,000,000	At least one A and minimum B in all the three subjects.
Top AS Level	750,000	At least one A and minimum B in all the four subjects
Top IGCSE Level	500,000	At least 5 A*
Top Checkpoint Level	250,000	With 6 points in all subjects

3. Rewarding our continuing students

Type	Reward	Classes
Best student overall for each class	Voucher worth 100,000	YEAR 7 to YEAR 13

Type	Reward	Classes
Most improved in class	Voucher worth 50,000	YEAR 7 to YEAR 13

All rewards will be given in the presence of their parents.

Awards

INDEPENDENCE CONGRATULATORY MESSAGE



Galaxy International School Uganda would like to wish families and friends from Gambia happy Independence celebrations!

Cambridge Assessment International Education - Continuous Professional Development Mathematics/Humanities

Due to adjustments in the Cambridge Assessment International Education curriculum, GISU is committed to developing its teaching staff through Continuous Professional Development in order to match with new demands of their subjects. Six teaching staff are attending a face-to-face training workshop organised by Cambridge International Assessment on Active Learning and Assessment for Learning taking place at GEMS Cambridge International School Kampala, from 20 February 2020 to 21 February 2020.

Student-Led Conferences

We thank our parents for taking their time to come and discuss the growth and achievement our students have made through the Student-Led Conferences. What a joy it is to have such partnership and collaboration with each of you!

Our students were able to share with their parents the work they were proud of, what they've learned through certain learning opportunities and what their goals are moving forward. Students had this opportunity to take ownership of their learning/performance and grow as leaders as they led through their conferences.

Note: Please schedule an appointment with your child's class teacher, in case you missed out on the conferences.

Reception Class student led conference will be held next week Monday, 24 February 2020 to Friday, 28 February 2020 from 3:15 pm to 4:45 pm. Kindly endeavour to be there.

DofE SOUTH AFRICA - PARTICIPANT'S ACCOUNT



GISU would like to extend its sincere gratitude to the parents that entrusted us with their children for The Duke of Edinburgh's International Award Expedition in South Africa during the Half-Term II Break. Participants had time to reflect on their lives. Many life skills were learnt during this Adventurous Journey these included: confidence, ability to manage emotions, resilience and determination, building relationships and leadership, creativity and adaptability, planning and problem-solving, intercultural competence as well as, personal and social well-being. One of the participants noted, "I have been able to experience what my mum has always told us about her lifestyle when growing up, walking long distances to access schools, water and food. Our village was never posh as it is right now – "Rogers Participants also had a chance to visit some of the iconic sites in Johannesburg such as the President's Office (union buildings), the Gold Reef City theme park and the Mall of Africa where most of the shopping was done. We would like to thank the entire GISU fraternity for supporting the students tirelessly and making the expedition an epic success.



the World
Scholar's Cup®



WSC Practice - Debate Link

Galaxy International School Uganda is proud to host the World Scholar's Cup (WSC) once again this year. The WSC is an International Academic Competition in which learners participate in 4 different challenges - Debate, Collaborative Writing, Scholars Challenge and the Scholars Bowl. The WSC aims to improve critical thinking skills, research, general communication skills, build confidence, memory, thinking and good listening skills. This competition attracts students of 9 years of age and above who are regrouped into the junior and senior categories.

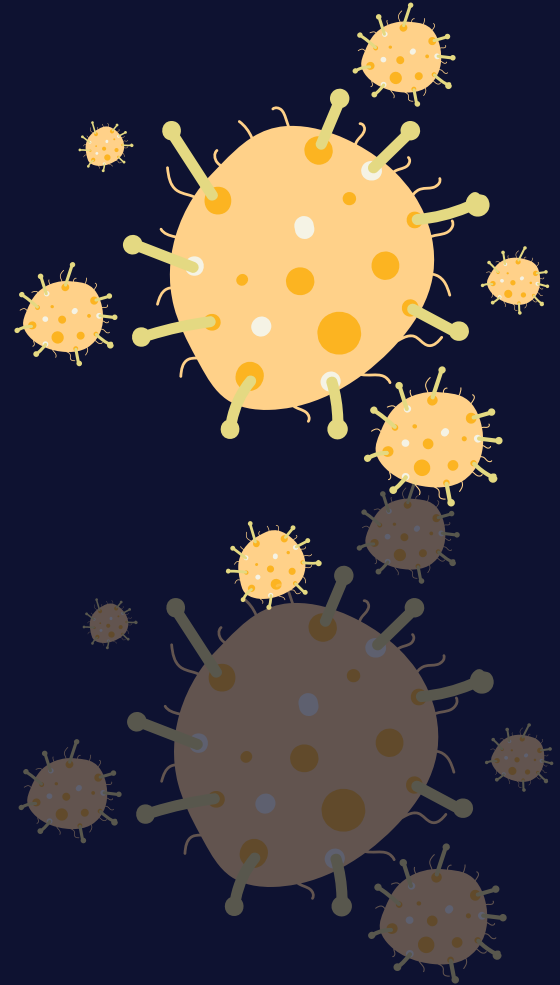
In a bid to prepare our students for this Kampala Competition and to better our scoring strategies, here is a quick link about debating [debate.org](https://www.debate.org) - please explore this site where individuals from around the world come to debate and educate about popular topics.

Every year the WSC addresses a particular theme in line with the changing needs of the world. This year's theme is "**A world renewed**". Other helpful sites are quora.com, Wikipedia and the World Scholars Cup page with a variety of links to guide you on the current topics for research.

The school has availed a booklet consisting of the six subjects to be addressed by the World Scholars to help guide the students in their research. It is very important for participants to choose an area/subject of interest in order to maximise on the writing, better their evidence when debating and to equip them with first hand information while attempting the multiple choice questions in the scholars challenge.

We call for all the necessary support from parents towards achieving success, during this years World Scholar's Cup.

HEALTH AND SAFETY: CORONAVIRUS UPDATES



Welcome back from the Half-Term II Break! The coronavirus epidemic is still here and we therefore continue to caution our staff, learners and parents to be alert by looking out for signs and symptoms of the virus and acting immediately when a threat is discovered.

Do not forget to:

- Regularly wash your hands with soap
- Cover your mouth and nose when coughing and sneezing,
- Avoid close contact with anyone showing symptoms of respiratory illness such as coughing and sneezing.
- Go to the hospital as soon as you realize any of the above symptoms

As the health and safety committee of GISU, we are committed to sensitizing our learners about this virus and the preventive measures that should be taken.

We call upon you our dear Parents to emphasize hygiene at home at all times. We wish you the very best of the last half of Term III!

CO-CURRICULAR ACTIVITY: 3D PRINTING



We are proud to announce that we have started a 3D Printing Programme at GISU. The purpose of this co-curricular activity is to teach students how to design complex two and three-dimensional artifacts, safely operate a 3D printer, combine fabricated parts with appropriate off-the-shelf hardware such as standoffs and threaded fasteners to produce functional objects, write a Python code to procedurally generate DXF files

for STL files for 3D printing, to go beyond what CAD software alone can do along with STEM Education and developing 21st century skills.

After completing the course, students will have access to the 3D printing facilities for the rest of their time here at GISU. They are welcome to use these facilities for future class projects, research or personal projects.

NEXT WEEK'S THEME: BEING REFLECTIVE

This coming week we shall focus on being reflective. Parents and teachers are the greater guides on how our learners respond to the environment around us.

Marian Wright Eldman said it best when she indicated that, "being thoughtful and considerate of others will take our children further in life than any education they ever received".

We shall show videos and talk to learners about being reflective and the characteristics they need to develop to be a reflective people.



USA FAMILY TRIP



Dear Parents,

We would like to inform you that the deadline for making the first instalment for the USA Family Trip has been extended to 28 February 2020. Please be reminded that the trip will cost \$3325 excluding flight. You are requested to pay the commitment fee of \$1650 to help us process visas and make early bookings.

For more information, please contact the Trip Coordinators on **+256772457687 / +256781468000** or viceprincipal@gisu.ac.ug / admissions@gisu.ac.ug.